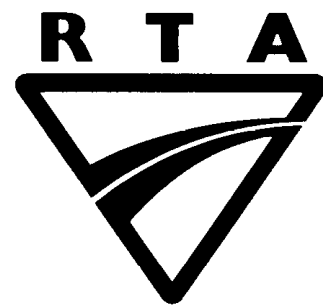


---

# Preamble and Locality Plan



**COPYRIGHT ROADS AND TRAFFIC AUTHORITY OF NEW SOUTH WALES**

VERSION FOR: Hume Highway widening between Brooks Road  
and Narellan Road. Contract No. 08.2614.1125  
DATE: August 2008

## PREAMBLE

The Roads and Traffic Authority is now inviting tenders from the RTA pre qualified R80 contractors for widening of the Hume Highway between Brooks Road and Narellan Road (Contract No. 08.2614.1125).

The Hume Highway is the principal road route between Sydney and Melbourne and is an important link for commuters and freight transport. It has a mix of regional, intra-state and inner-state traffic due to its role as part of the National Highway network. A part of the Hume Highway south of Liverpool is known in NSW as the F5 Freeway.

The Hume Highway links to the M5 (South Western Motorway) which is the major link to Sydney Airport, Port Botany and the Sydney CBD from the south-west. The Hume Highway also links to the M7 which accesses the North Coast.

The Hume Highway has significant congestion issues with travel speed in this 110km/hr zone, down to 52 km/hr northbound in 2006 at Raby Road in the am peak and down to 66 km/hr southbound in the pm peak. The congestion currently experienced, reduces the road's ability to fulfil its function for all road users.

The growing traffic volumes have resulted in significant impacts such as high crash rates, low travel speeds and community severance.

The total length of the project is 11 km.

The traffic volumes are of the order of 70,000 vehicles per day. The primary objective of the project is to widen the Freeway to relieve congestion, thereby providing improvements in economic efficiency and road safety. To meet this primary objective, the following specific project objectives have been targeted:

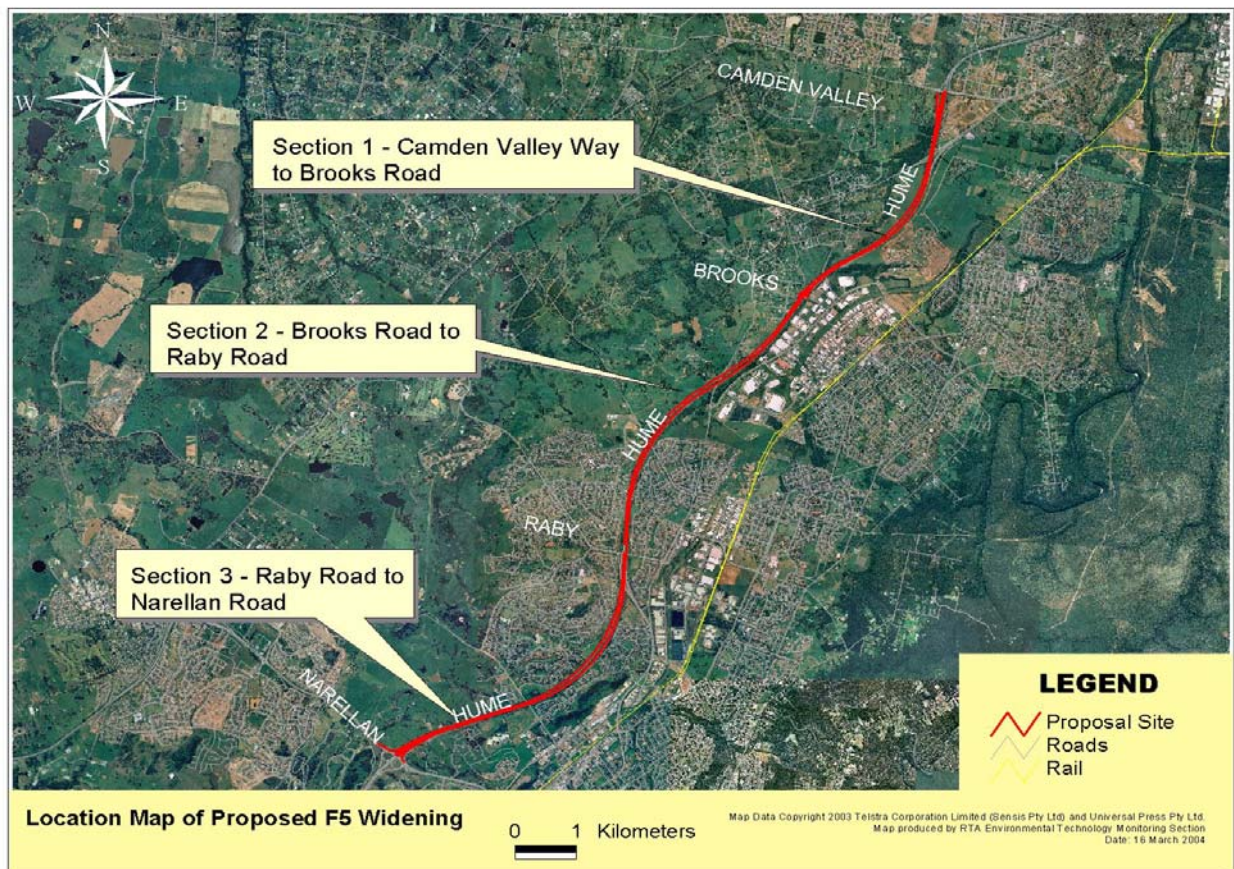
- Provide a road transport facility that ensures safe and efficient travel for the design life of the project taking into account the type, volume and speed of the expected traffic, level of service and safety;
- Reduce vehicle operating costs through improved traffic flow;
- Provide a well engineered, safe, aesthetically pleasing and environmentally acceptable road transport facility for all road users with minimal impact during construction;
- Provide a road transport facility capable of lowering the crash rate and meet RTA corporate targets to reduce road deaths and serious injury;
- Ensure that the impacts on the environment as a result of the proposal are minimised; and
- Design and implement the upgrade matching the character of nearby upgraded section.

In summary the project will involve:

- widening of the carriageway to 4 lanes in both direction between Brooks Road and Campbelltown Road (identified as Section 2), each 3.5m wide, with a 3.0m outer shoulder and a 1.0m inner shoulder;
- widening of the carriageway to 3 lanes in both direction between Campbelltown Road and Narellan Road (identified as Section 3), each 3.5m wide, with a 3.0m outer shoulder and a 1.0m inner shoulder;
- widening of on-road Bunbury Curran Creek bridge for both southbound and northbound carriageways by 3.5 m
- Construction of a shared pedestrian/cycle path bridge across the Hume Highway between Claymore and Woodbine;
- strengthening of existing pavement by asphalt overlay on a substantial portion adjacent to the widening works;

## LOCALITY SKETCH

The location is south of the recently completed widening works between Camden valley way and Brooks Road (identified as Section 1).



## RTA Specifications, Policies And Guidelines

RTA documents included on the Tender Invitation CD are listed in Clause 1.3 of the RFT.

Access to RTA standard specifications, guides to specifications and test methods is also available via the RTA website at <http://www.rta.nsw.gov.au>, then “Partners and suppliers”, then “Specifications”.

Access to RTA Traffic Management policies and guidelines is available via the RTA website at <http://www.rta.nsw.gov.au>, then “Traffic Information”, then “Policies and Guidelines register”.

Hardcopies of certain documents may be obtained as below:

- RTA Bridge Policy Manual can be purchased from RTA Bridge Section for \$99 including GST per copy (contact Peter Fox - Tel 02 8837 0848)
- RTA Structural Drafting Manual can be purchased from RTA Bridge Section for \$110 including GST per copy (contact Ian Hobson - Tel 02 8837 0820)
- RTA Bridge Section Standard Drawings can be purchased from RTA Bridge Section for \$385 including GST for the full set. (contact Peter Fox - Tel 02 8837 0848)
- RTA Standard Specifications for Bridgeworks and Roadworks can be purchased by the means advised in the RTA internet site “Doing Business with us” or through the RTA Representative. Costs for the full sets including GST are:
  - All Bridgeworks Specifications \$220
  - All Roadworks Specifications \$385
  - All Materials Specifications \$165
- RTA Guide for the Organisation of CADD Data and the Presentation of CADD Drawings for Bridgeworks can be purchased from RTA Bridge Section for \$27.50 including GST per copy (contact Ian Hobson - Tel 02 8837 0820)
- RTA Data Exchange Policy can be purchased from RTA Bridge Section for \$22 including GST per copy (contact Ian Hobson - Tel 02 8837 0820)