

# BREWARRINA MPS

56 DOYLE ST, BREWARRINA NSW 2839

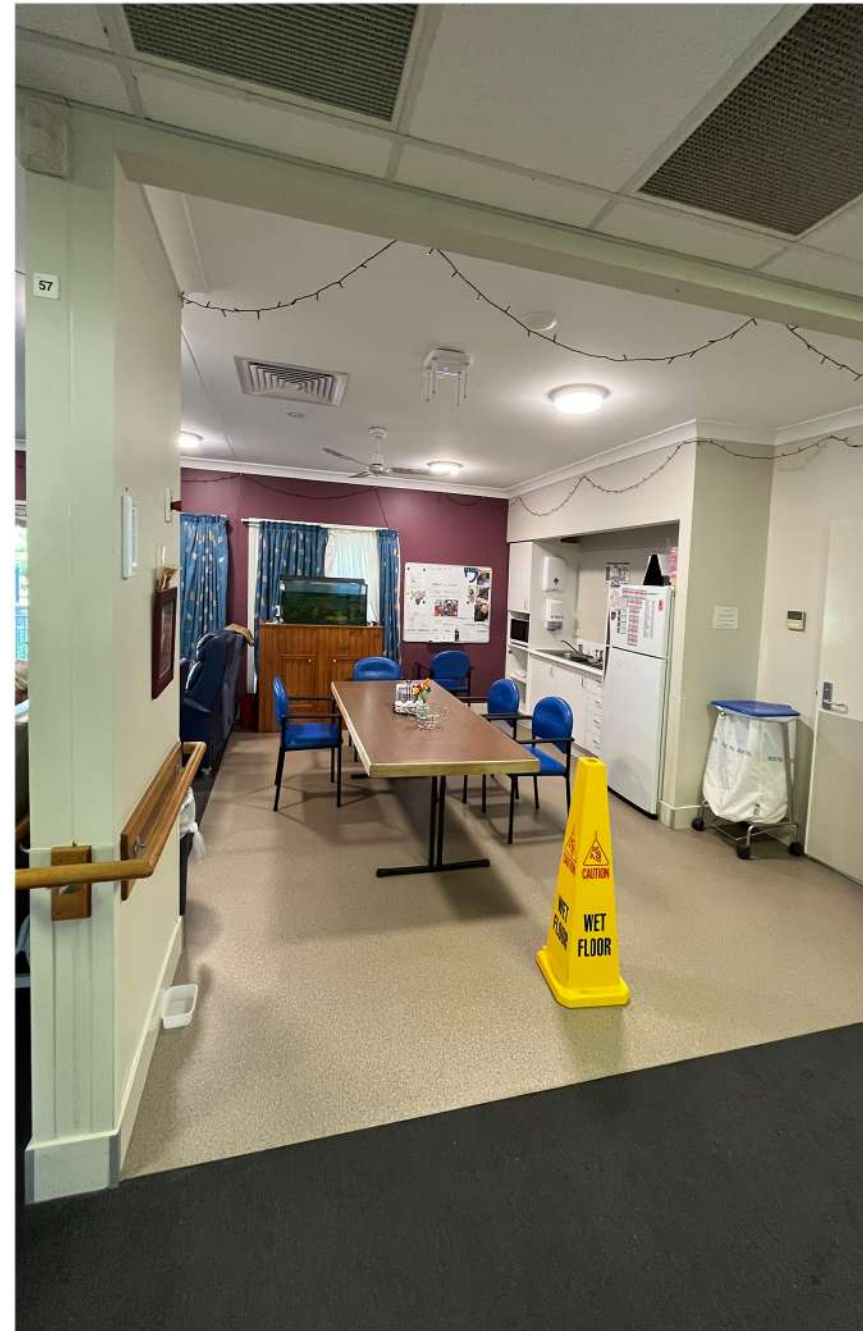
## TENDER DOCUMENTATION

PROJECTS 2111-02

AR 1 - EXISTING FLOOR PLAN

AR 2 - PROPOSED FLOOR PLAN

AR 3 - PROPOSED KITCHEN JOINERY

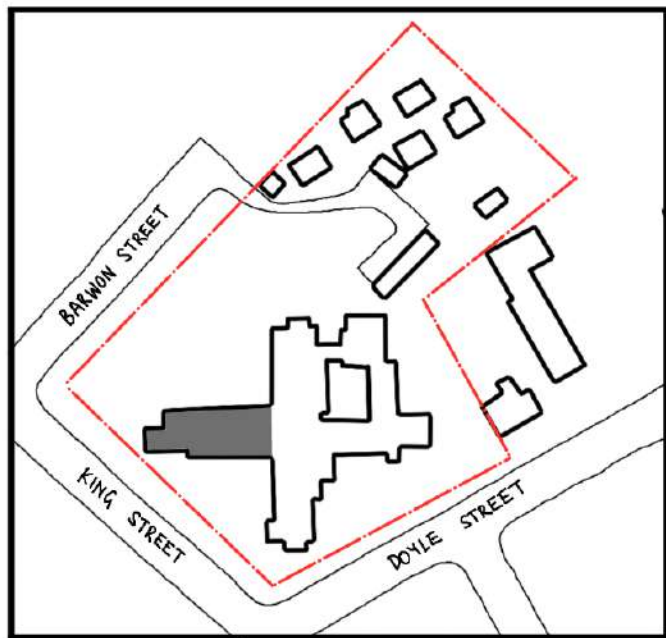


constructive dialogue architects' studio pty ltd  
nick seemann, nom architect 6731

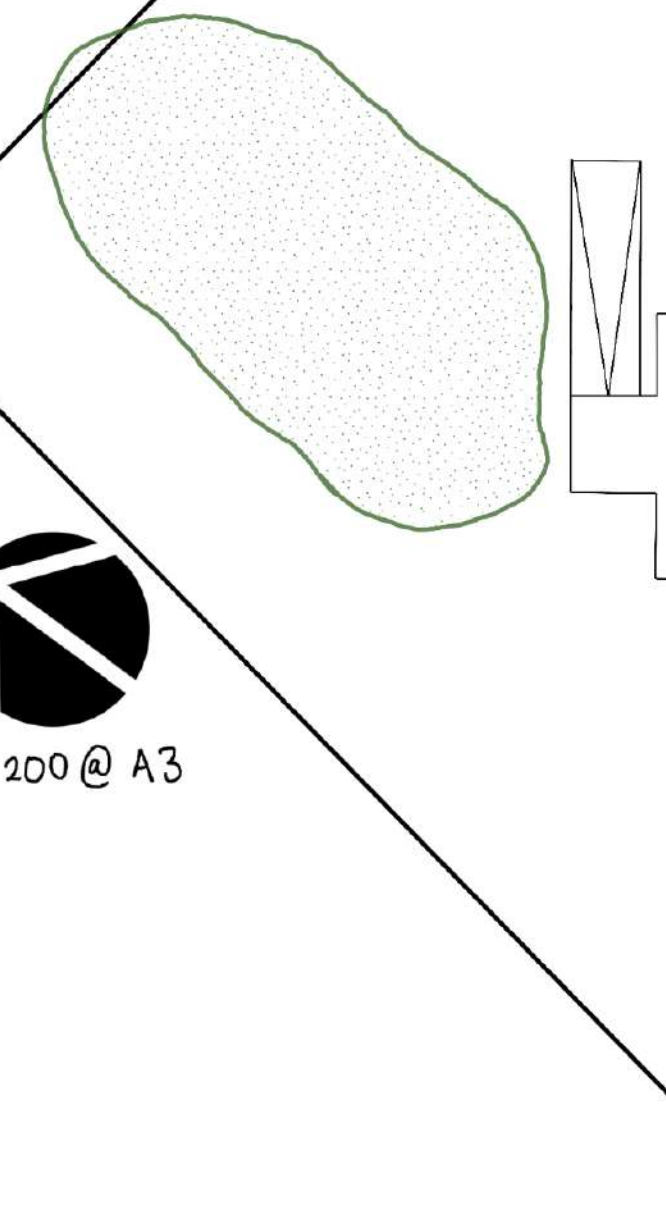
suite 4, 462 cleveland street, surry hills nsw 2010  
phone +61 2 9319 1709 abn 35 105 167 066  
[www.constructivedialogue.com.au](http://www.constructivedialogue.com.au)

constructive  
dialogue  
architects





LOCATION PLAN



Verify all dimensions on site before commencing the work shown on this drawing. Work to written dimensions only, do not scale from drawings. Check all dimensions for discrepancies and report any discrepancies for a decision before proceeding with work.

**constructive  
dialogue  
architects**

Suite 4  
462 Cleveland Street  
Surry Hills NSW 2010  
+612 9319 1709  
constructivedialogue.com.au  
Registered Architect - Nicholas Seemann (6731)  
ABN 35 105 167 066  
© constructive dialogue architects' studio pty ltd

**Health**  
Western NSW  
Local Health District

Client  
Western NSW Local Health  
District  
65 Church Street, MUDGEE 2850

Project  
**Brewarrina MPS Upgrade**

Project No.  
2111-02

Scale  
1 : 200  
Sheet Size  
A3

Drawn By  
VM / JH

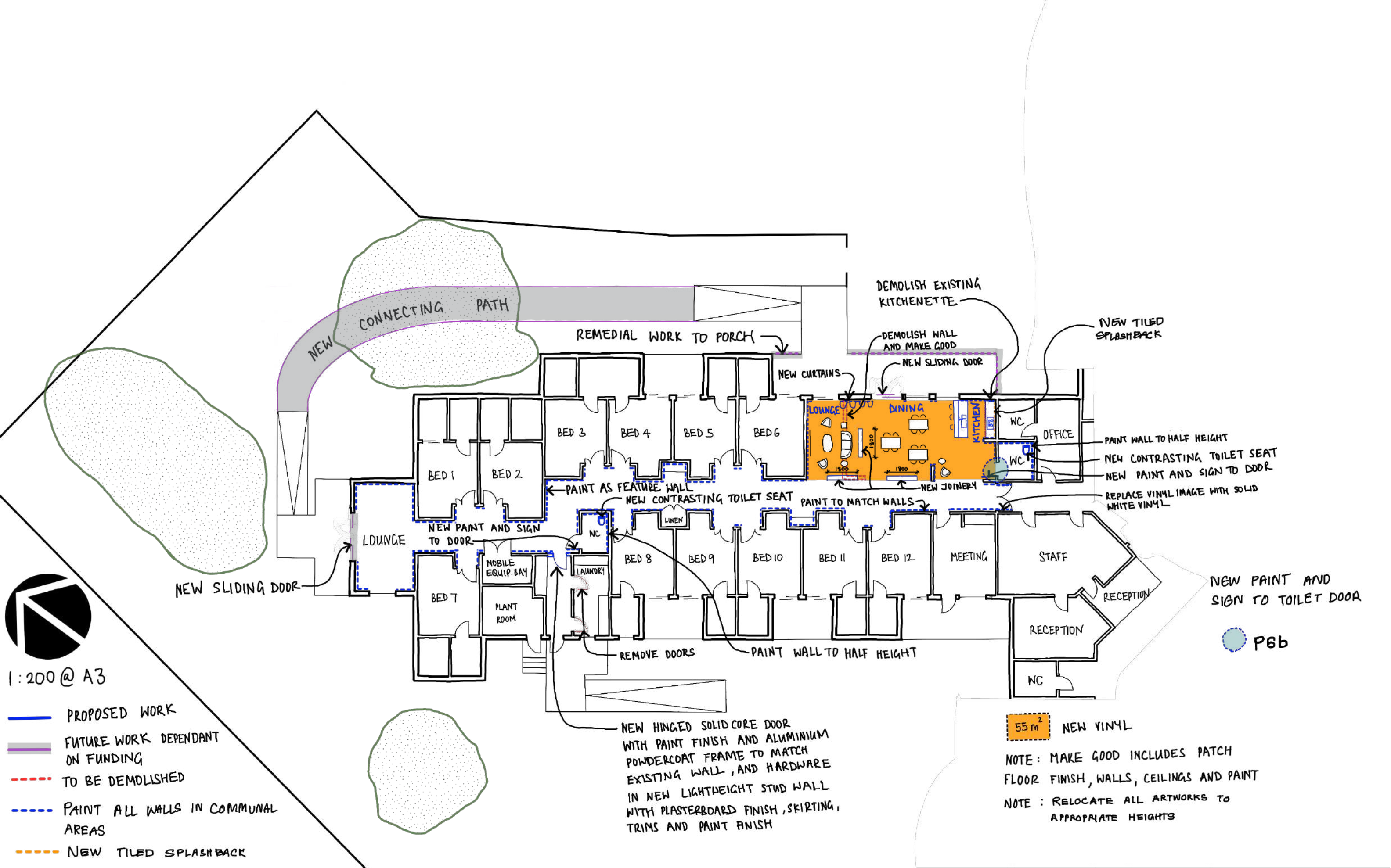
Drawing Title  
**Existing Floor Plan**

Drawing No.  
AR 1

Revision  
A

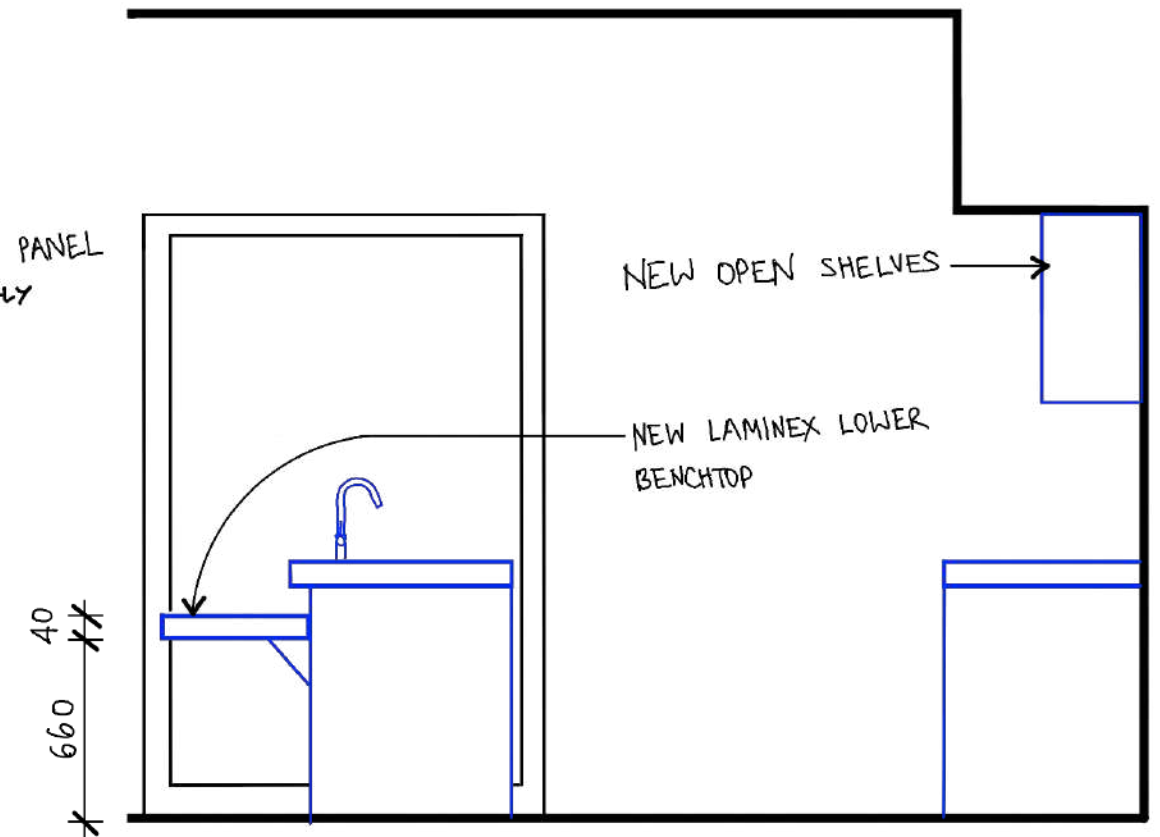
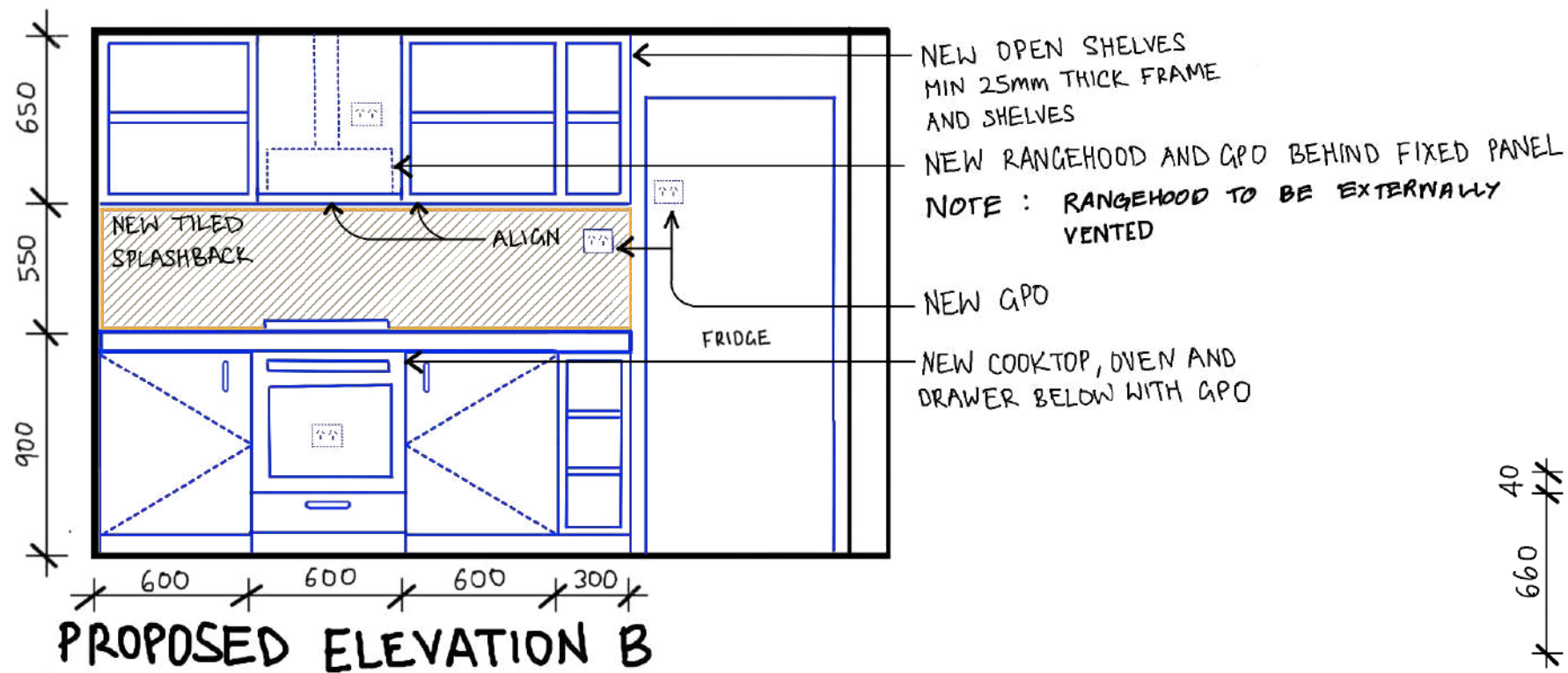
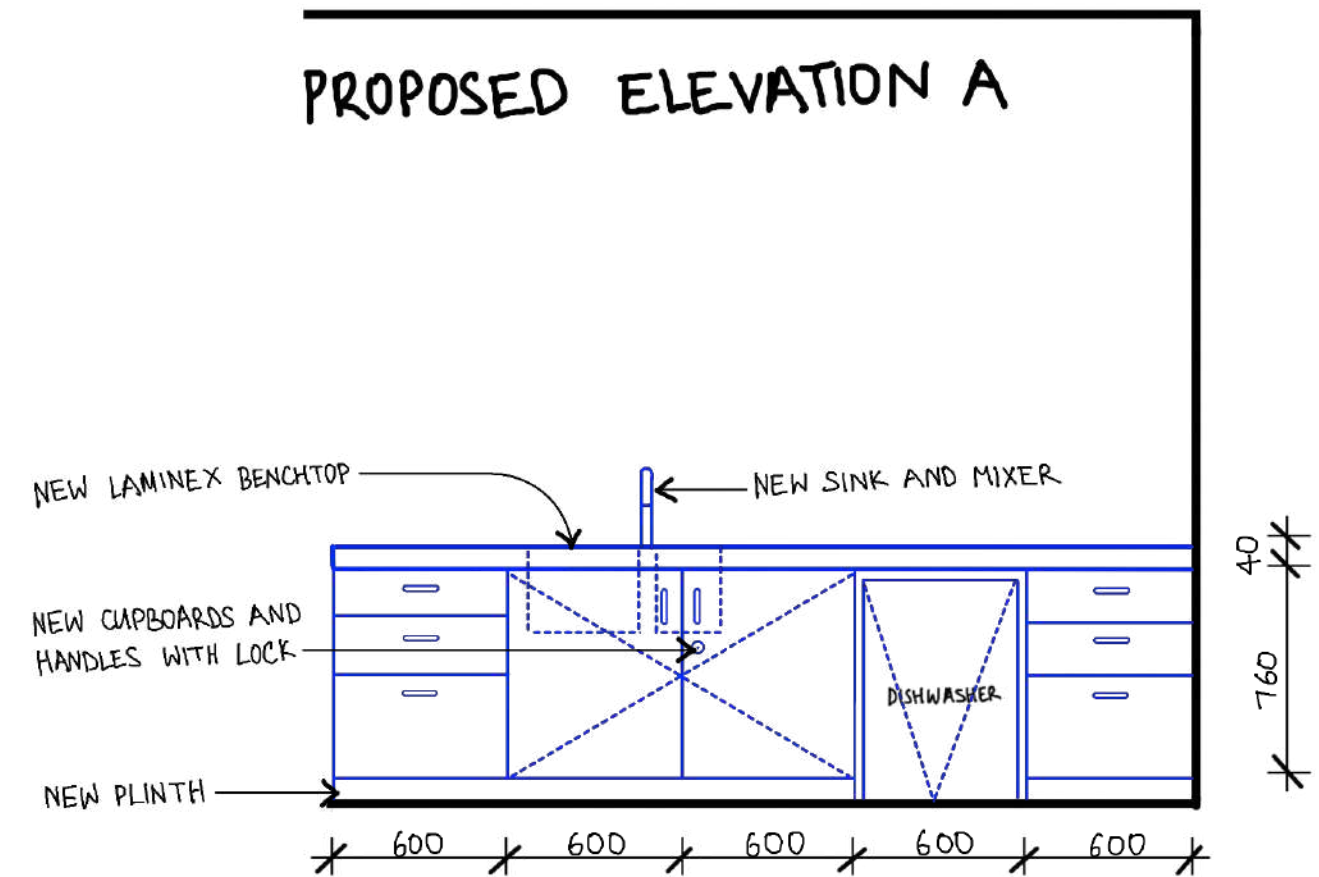
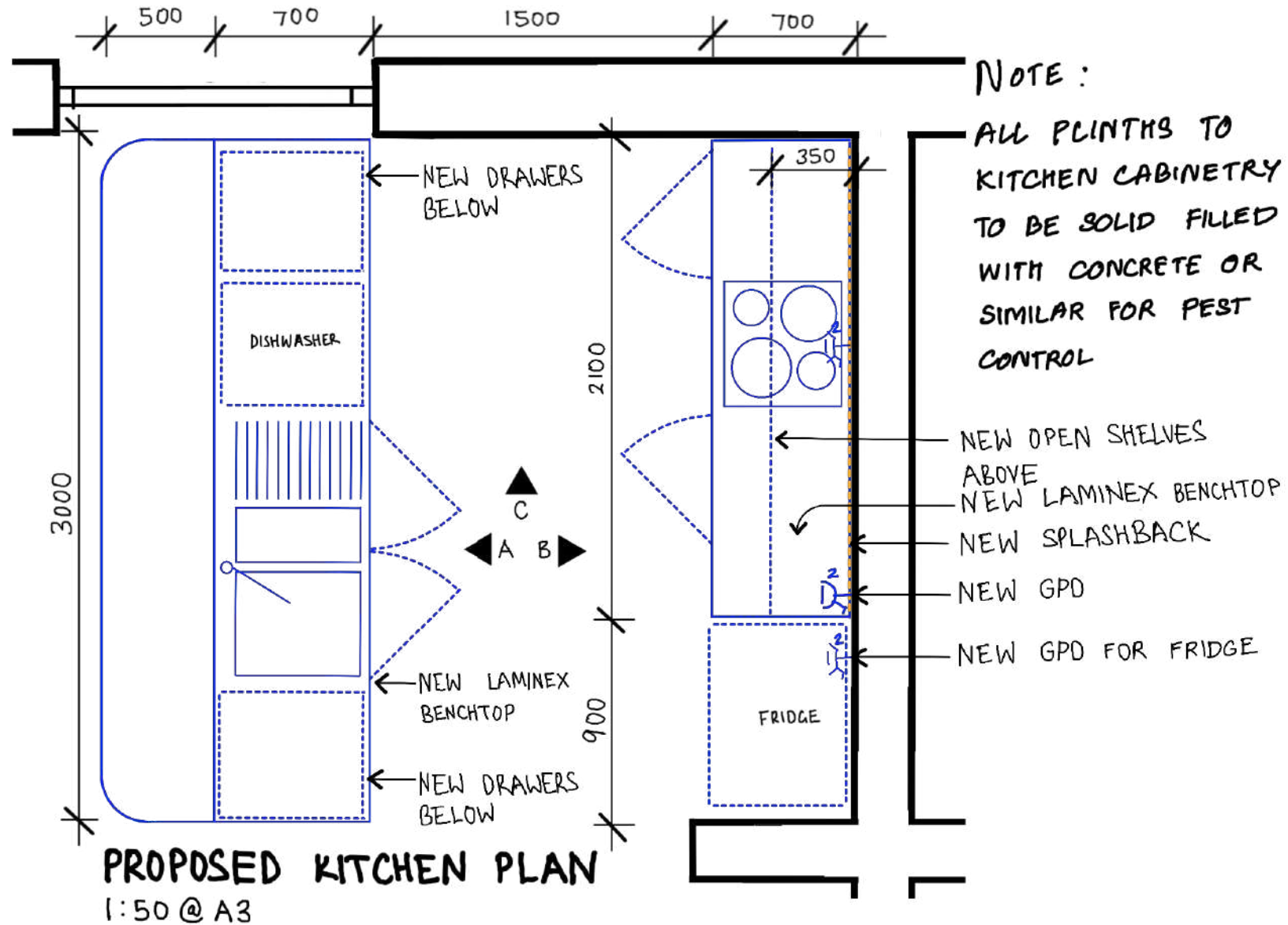
Revision	Date	Issue Notes	Checked
A	10-02-23	FOR TENDER	JH





Revision	Date	Issue Notes	Checked	Verify all dimensions on site before commencing the work shown on this drawing. Work to written dimensions only, do not scale from drawings. Check all dimensions for discrepancies and report any discrepancies for a decision before proceeding with work.	<div> <div>constructive dialogue architects</div> <div>           Suite 4            462 Cleveland Street            Surry Hills NSW 2010            +612 9319 1709            constructive dialogue .com.au            Registered Architect - Nicholas Seemann (6731)            ABN 35 105 167 066            © constructive dialogue architects' studio pty ltd         </div> </div>	<div> <div>Client</div> <div> <div>           Health            Western NSW            Local Health District         </div> </div> <div>Western NSW Local Health District 65 Church Street, MUDGEE 2850</div> </div>	Project Brewarrina MPS Upgrade	Scale 1 : 200 Sheet Size A3	Drawing Title Proposed Floor Plan	
							Project No. 2111-02	Drawn By VM / JH	Drawing No. AR 2	Revision A





A	10-02-23	FOR TENDER	JH	Verify all dimensions on site before commencing the work shown on this drawing. Work to written dimensions only, do not scale from drawings. Check all dimensions for discrepancies and report any discrepancies for a decision before proceeding with work.	<div>constructive dialogue architects</div> <div>Suite 4 462 Cleveland Street Surry Hills NSW 2010  +612 9319 1709 constructivedialogue.com.au Registered Architect - Nicholas Seemann (6731) ABN 35 105 167 066 © constructive dialogue architects' studio pty ltd</div>	<div>Client</div> <div> <b>Health</b> Western NSW Local Health District</div> <div>Western NSW Local Health District 65 Church Street, MUDGE E 2850</div>	Project	Scale	Drawing Title	
Revision	Date	Issue Notes	Checked				Brewarrina MPS Upgrade	Sheet Size A3	Proposed Kitchen Joinery	
							Project No.	Drawn By	Drawing No.	Revision
							2111-02	VM / JH	AR 3	A