

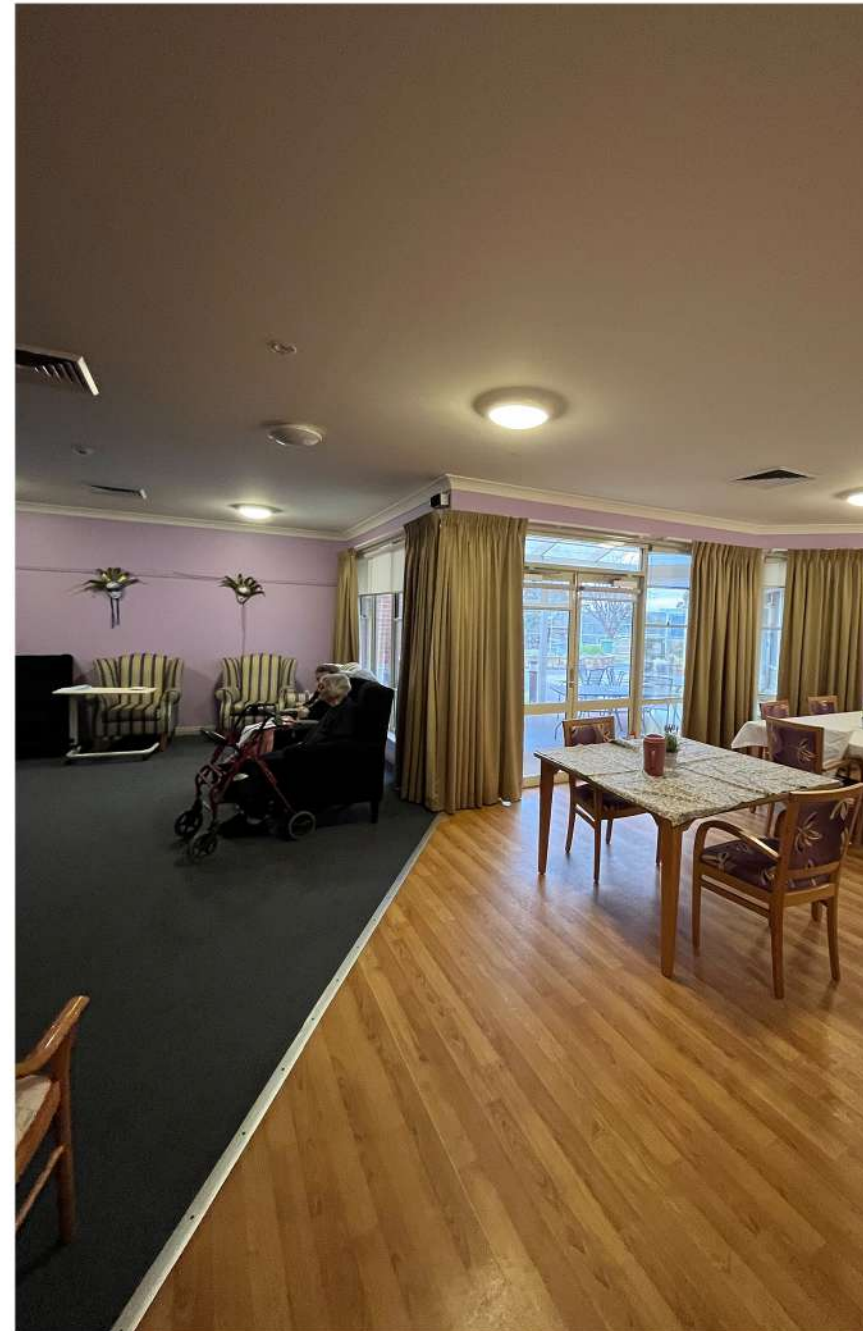
GRENFELL MPS

80-96 COWRA RD, GRENFELL NSW 2810

TENDER DOCUMENTATION

PROJECT 2111-05

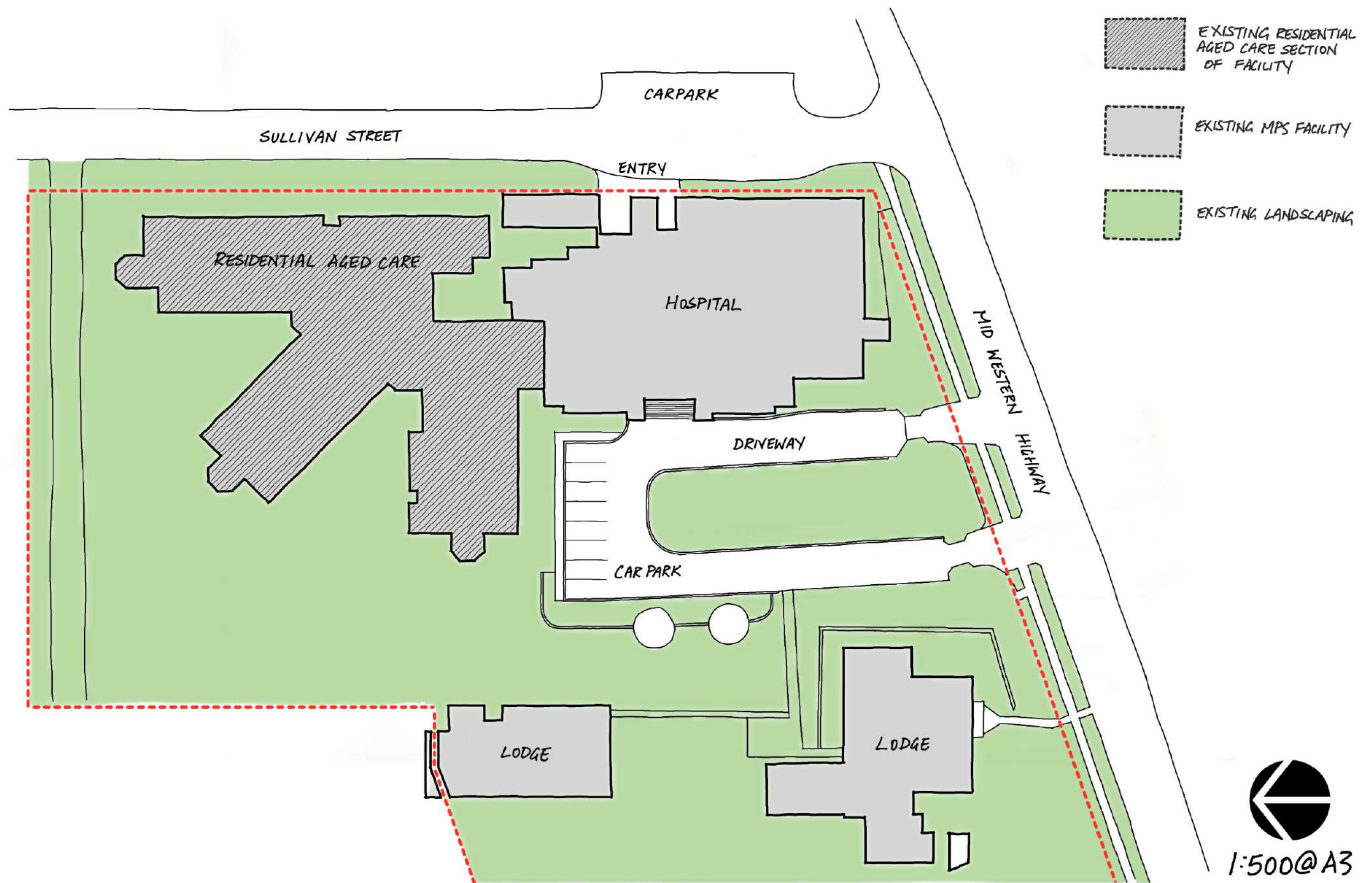
- AR 1 - EXISTING SITE PLAN
- AR 2 - EXISTING GROUND PLAN
- AR 3 - PROPOSED FLOOR PLAN
- AR 4 - PROPOSED FURNITURE LAYOUT
- AR 5 - JOINERY SCREEN WALL DETAIL
- AR 6 - BIFOLD DOOR DETAIL



constructive dialogue architects' studio pty ltd
nick seemann, nom architect 6731

suite 4, 462 cleveland street, surry hills nsw 2010
phone +61 2 9319 1709 abn 35 105 167 066
www.constructivedialogue.com.au

constructive
dialogue
architects

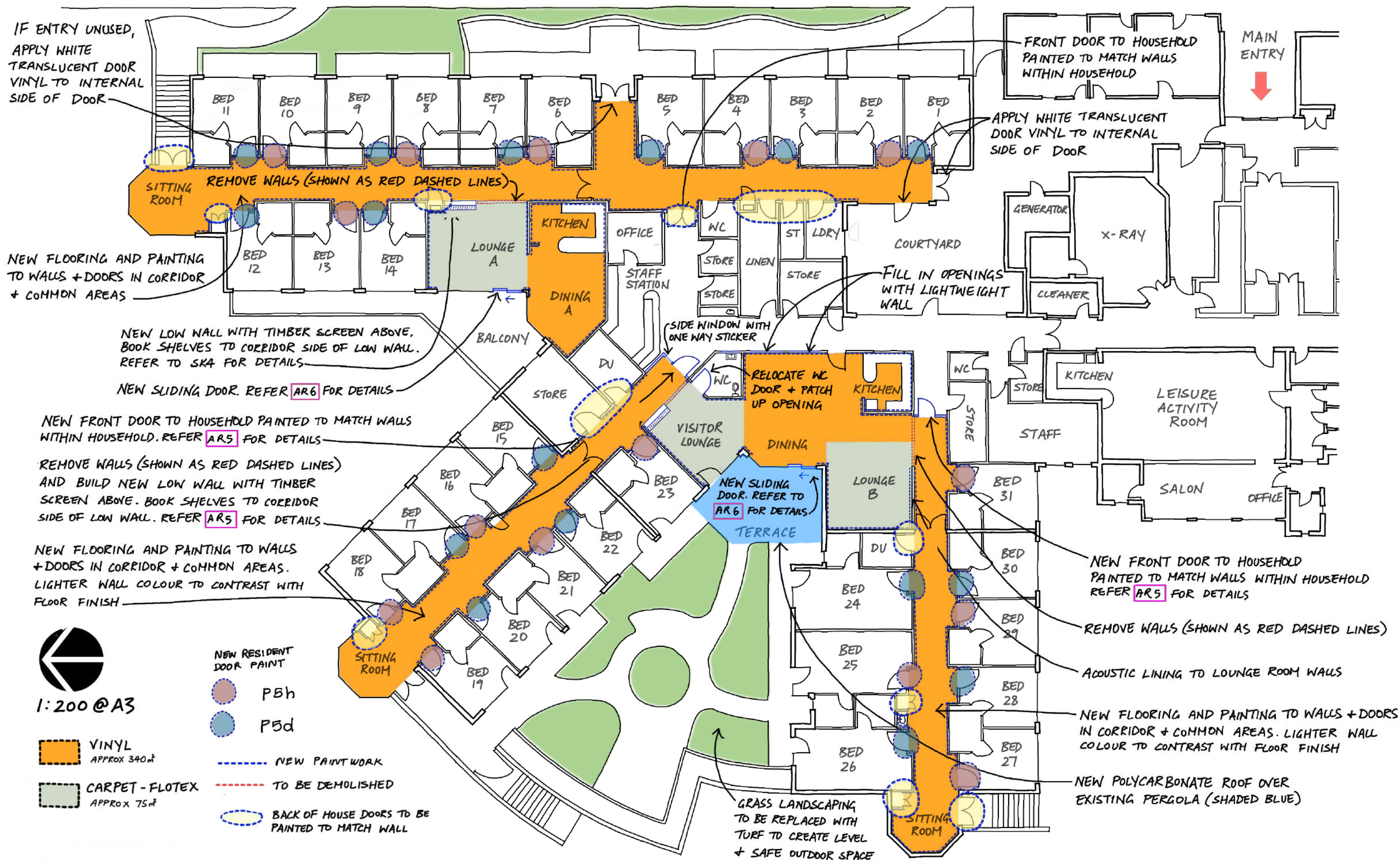


Revision	Date	Issue Notes	Checked	<p>Verify all dimensions on site before commencing the work shown on this drawing. Work to written dimensions only, do not scale from drawings. Check all dimensions for discrepancies and report any discrepancies for a decision before proceeding with work.</p>	<p>constructive dialogue architects</p>	<p>Suite 4 462 Cleveland Street Surry Hills NSW 2010 +612 9319 1709 constructivedialogue.com.au Registered Architect - Nicholas Seemann (6731) ABN 35 105 167 066 © constructive dialogue architects' studio pty ltd</p>	<p>Client</p> <p>NSW GOVERNMENT Health Western NSW Local Health District</p> <p>Western NSW Local Health District 65 Church Street, MUDGEE 2850</p>	<p>Project</p> <p>Grenfell MPS Upgrade</p>	<p>Scale</p> <p>1 : 500</p>	Drawing Title		
										Sheet Size	Existing Site Plan	
A	10-02-23	FOR TENDER	JH					Project No.	2111 - 05	Drawn By	Drawing No.	
											AR 1	Revision
										VM / JH		A



1:200 @ A3

Revision	Date	Issue Notes	Checked	Verify all dimensions on site before commencing the work shown on this drawing. Work to written dimensions only, do not scale from drawings. Check all dimensions for discrepancies and report any discrepancies for a decision before proceeding with work.	<div data-bbox="949 1879 1231 2068"> <div>constructive</div> <div>dialogue</div> <div>architects</div> </div>	<div data-bbox="1261 1879 1602 2068"> <div>Suite 4</div> <div>462 Cleveland Street</div> <div>Surry Hills NSW 2010</div> <div>+612 9319 1709</div> <div>constructivedialogue.com.au</div> <div>Registered Architect - Nicholas Seemann (6731)</div> <div>ABN 35 105 167 066</div> <div>© constructive dialogue architects' studio pty ltd</div> </div>	<div data-bbox="1632 1879 1929 2068"> <div>Client</div> <div>  <div>Health</div> <div>Western NSW</div> <div>Local Health District</div> </div> <div>Western NSW Local Health District</div> <div>65 Church Street, MUDGEE 2850</div> </div>	<div data-bbox="1958 1879 2359 2068"> <div>Project</div> <div>Grenfell MPS Upgrade</div> <div>Project No.</div> <div>2111 - 05</div> </div>	<div data-bbox="2389 1879 2493 2068"> <div>Scale</div> <div>1 : 200</div> <div>Sheet Size</div> <div>A3</div> <div>Drawn By</div> <div>VM / JH</div> </div>	<div data-bbox="2522 1879 2819 2068"> <div>Drawing Title</div> <div>Existing Floor Plan</div> <div>Drawing No.</div> <div>AR 2</div> </div>	<div data-bbox="2849 1879 2938 2068"> <div>Revision</div> <div>A</div> </div>
A	10-02-23	FOR TENDER	JH								



Verify all dimensions on site before commencing the work shown on this drawing. Work to written dimensions only, do not scale from drawings. Check all dimensions for discrepancies and report any discrepancies for a decision before proceeding with work.

**constructive
dialogue
architects**

Suite 4
462 Cleveland Street
Surry Hills NSW 2010
+612 9319 1709
constructivedialogue.com.au
Registered Architect - Nicholas Seemann (6731)
ABN 35 105 167 066
© constructive dialogue architects' studio pty ltd

Client
Health
NSW
GOVERNMENT
Western NSW Local Health District
65 Church Street, MUDGE E 2850

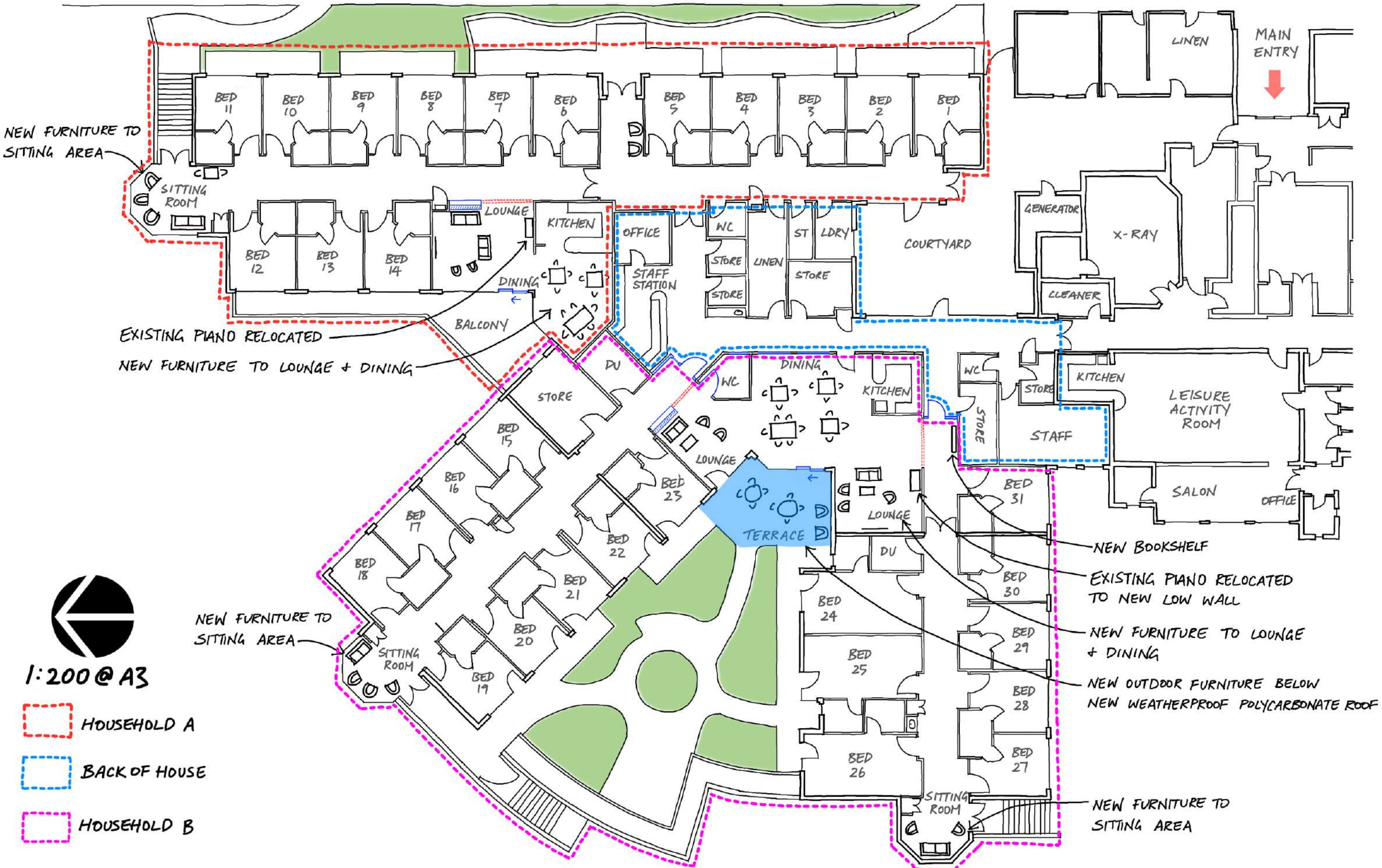
Project
Grenfell MPS Upgrade
Project No.
2111 - 05

Scale
1 : 200
Sheet Size
A3
Drawn By
VM / JH

Drawing Title
Proposed Floor Plan
Drawing No.
AR 3

Revision
A

Revision	Date	Issue Notes	Checked
A	10-02-23	FOR TENDER	JH

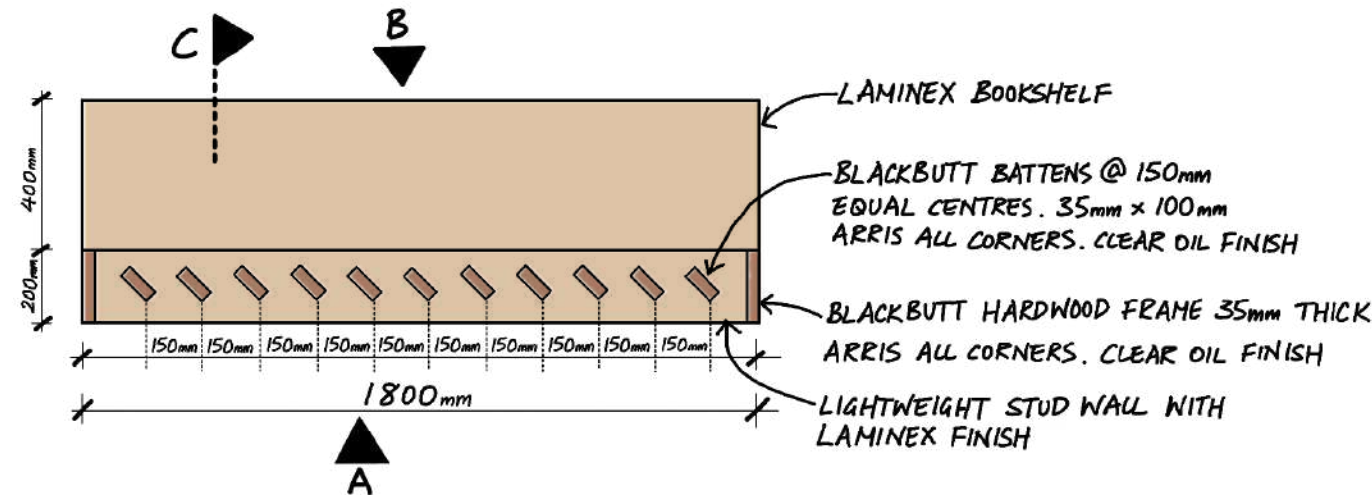


1:200 @ A3

- HOUSEHOLD A
- BACK OF HOUSE
- HOUSEHOLD B

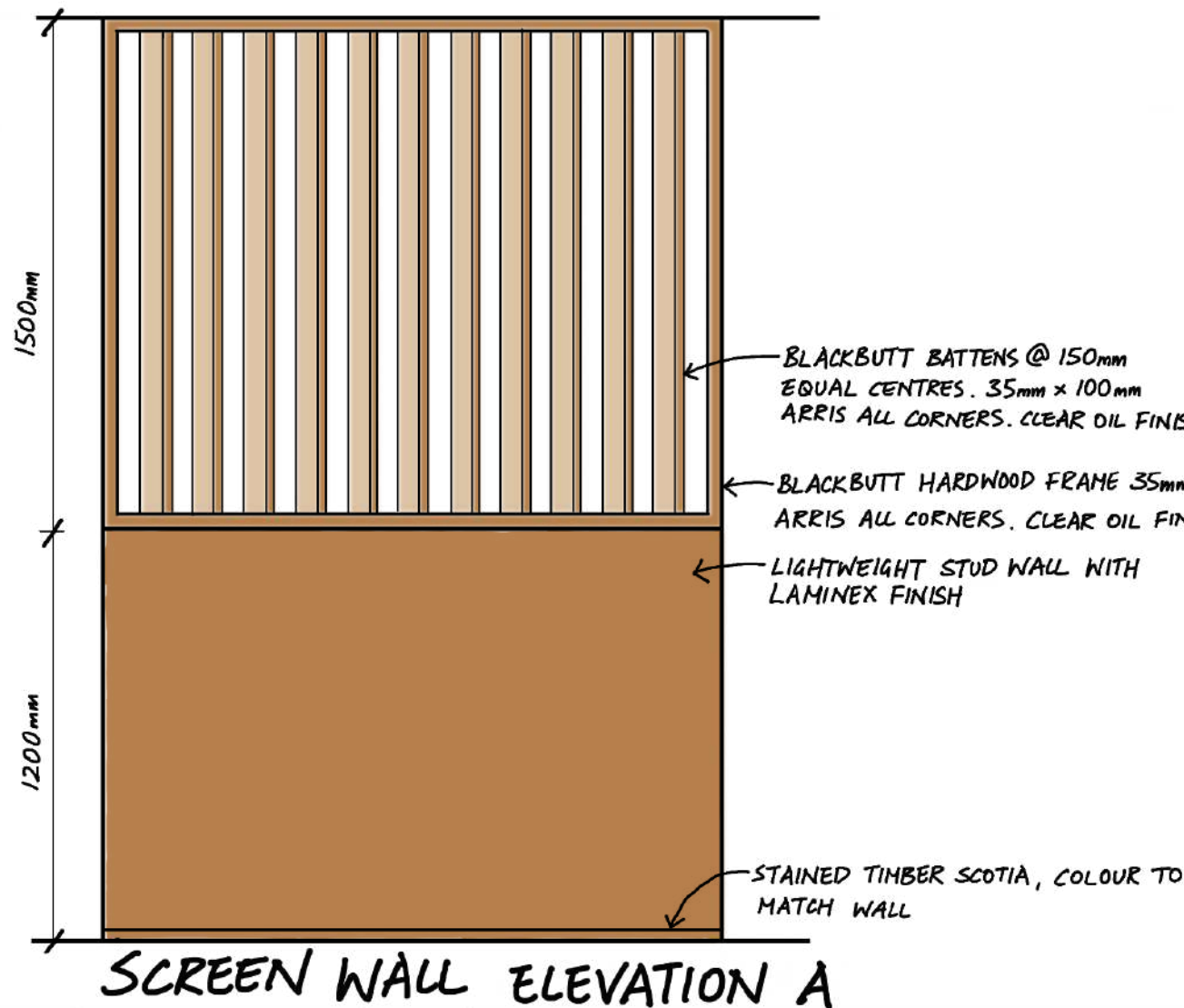
A	10-02-23	FOR TENDER	JH	Verify all dimensions on site before commencing the work shown on this drawing. Work to written dimensions only, do not scale from drawings. Check all dimensions for discrepancies and report any discrepancies for a decision before proceeding with work.	<div> <div>constructive dialogue architects</div> <div> Suite 4 462 Cleveland Street Surry Hills NSW 2010 +612 9319 1709 constructivedialogue.com.au Registered Architect - Nicholas Seemann (6731) ABN 35 105 167 066 © constructive dialogue architects' studio pty ltd </div> </div>	<div> <div>Client</div> <div> <div>Health Western NSW Local Health District</div> </div> <div>Western NSW Local Health District 65 Church Street, MUDGEE 2850</div> </div>	<div>Project</div> <div>Grenfell MPS Upgrade</div> <div>Project No.</div> <div>2111 - 05</div>
---	----------	------------	----	--	--	--	--

1:20@A3

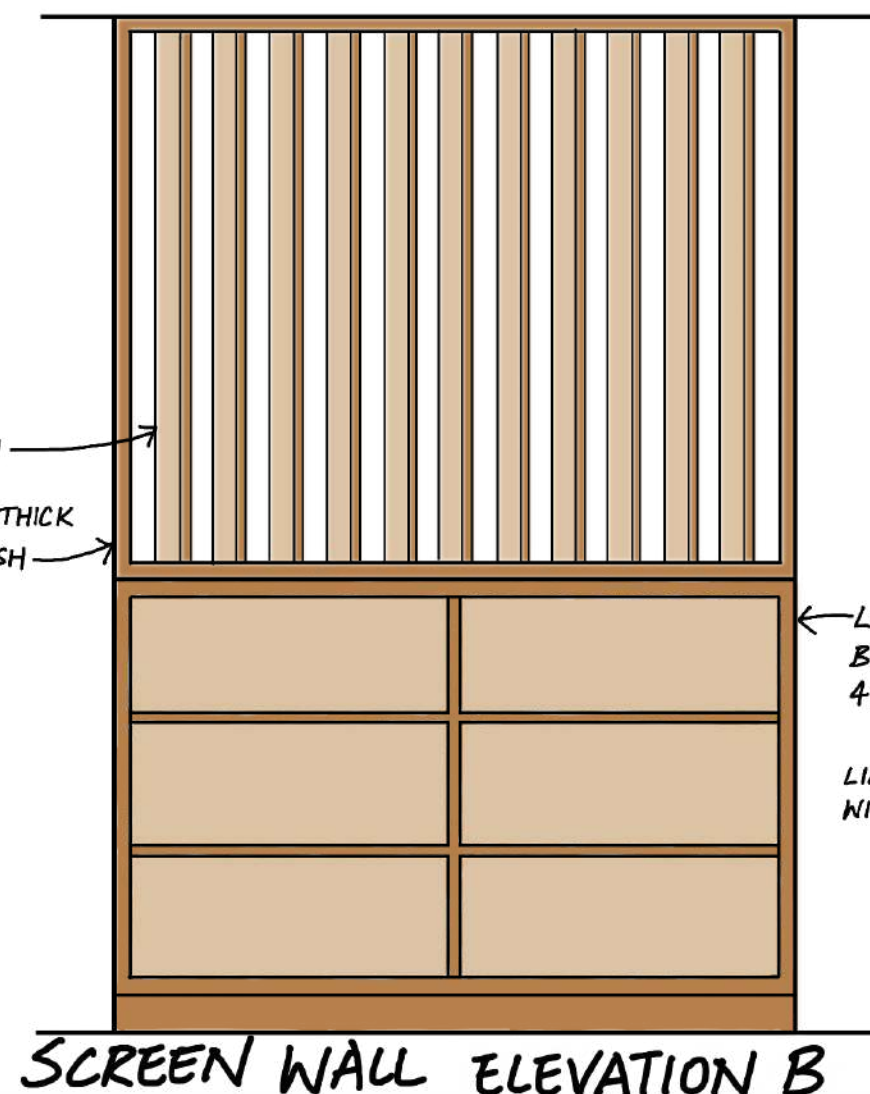


NOTE: SCREEN WALL TO LOUNGE A + VISITOR LOUNGE TO HAVE BOOKSHELVES AS SHOWN IN DETAILS ON THIS PAGE.
SCREEN WALL TO LOUNGE B TO HAVE SCREEN ONLY + 2200mm IN LENGTH.

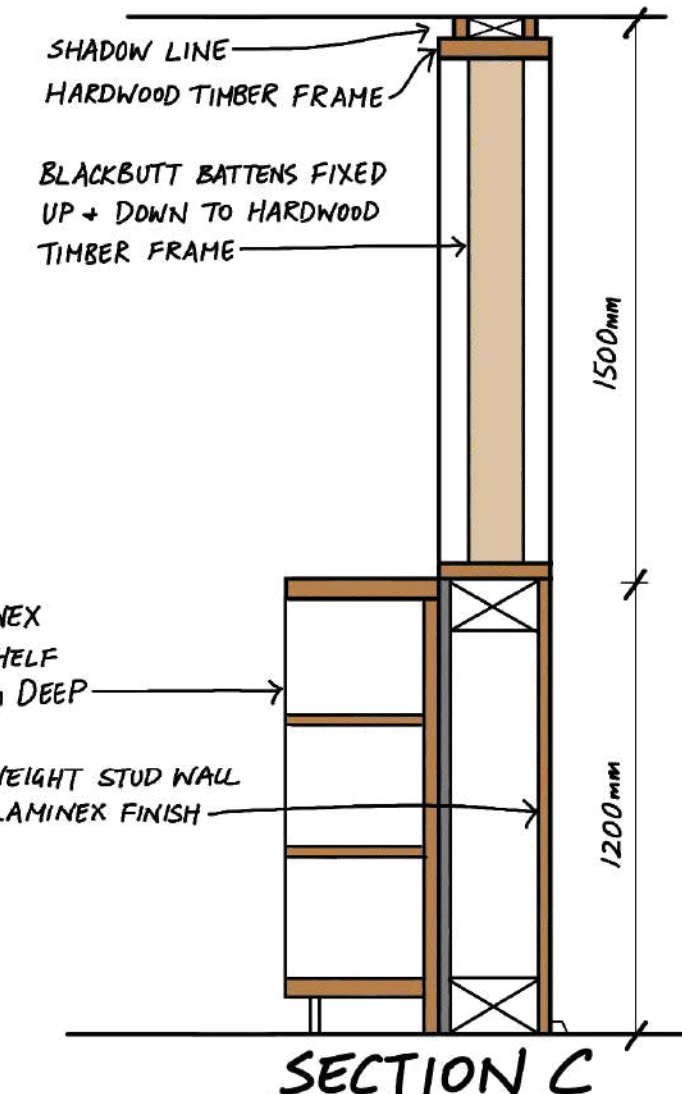
SCREEN WALL DETAIL PLAN



SCREEN WALL ELEVATION A

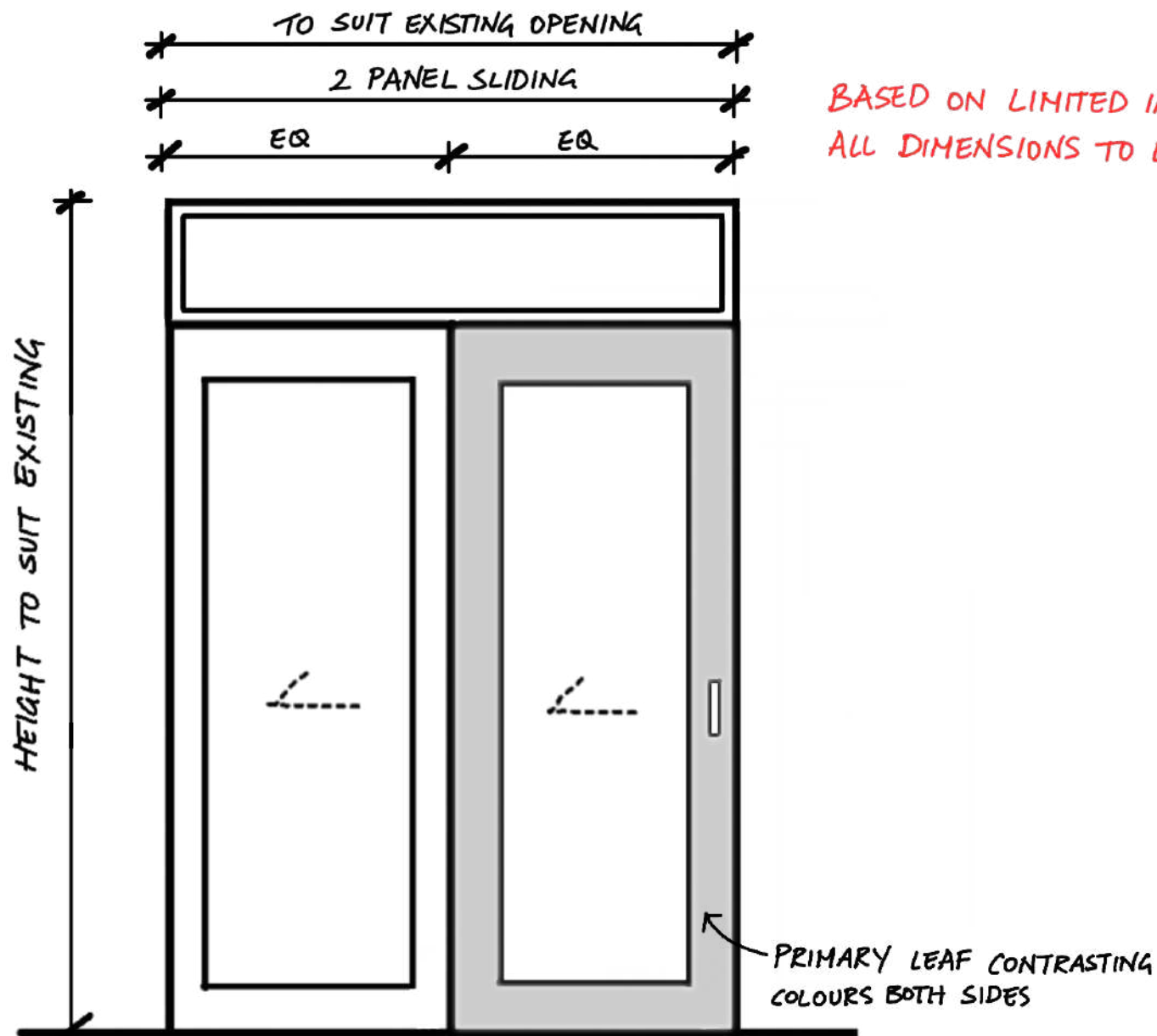


SCREEN WALL ELEVATION B



SECTION C

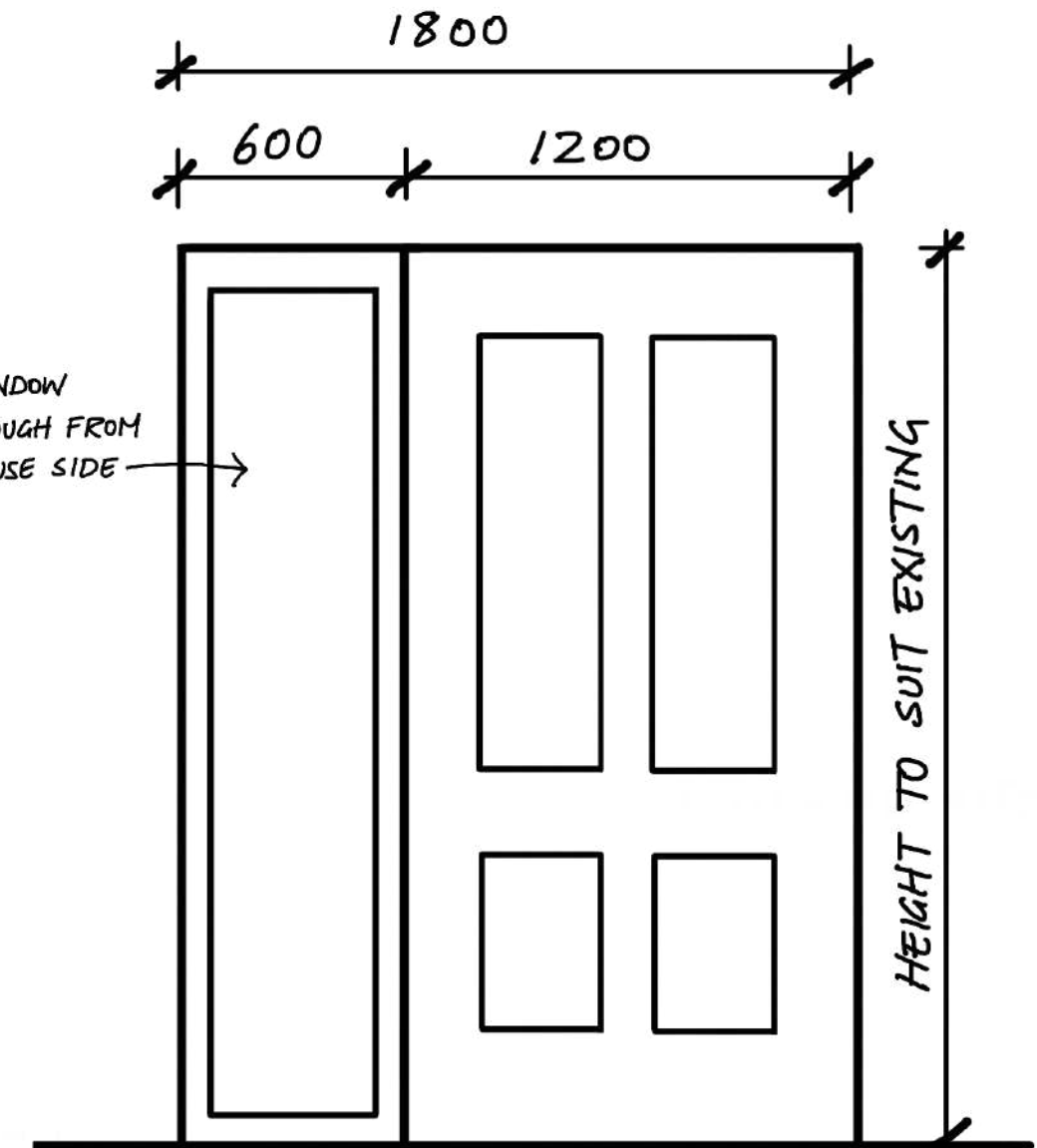
Revision A	Date 10-02-23	Issue Notes FOR TENDER	Checked JH	Verify all dimensions on site before commencing the work shown on this drawing. Work to written dimensions only, do not scale from drawings. Check all dimensions for discrepancies and report any discrepancies for a decision before proceeding with work.	<div> <div>constructive dialogue architects</div> <div> Suite 4 462 Cleveland Street Surry Hills NSW 2010 +612 9319 1709 constructive dialogue .com.au Registered Architect - Nicholas Seemann (6731) ABN 35 105 167 066 © constructive dialogue architects' studio pty ltd </div> </div>	<div> <div> <div>Health Western NSW Local Health District</div> </div> <div> Western NSW Local Health District 65 Church Street, MUDGE E 2850 </div> </div>	<div> <div>Client</div> <div>Project</div> <div>Project No.</div> </div> <div> Grenfell MPS Upgrade 2111 - 05 </div>	<div> <div>Scale</div> <div>Sheet Size</div> <div>Drawn By</div> </div> <div> 1 : 20 A3 VM / JH </div>	<div> <div>Drawing Title</div> <div>Drawing No.</div> <div>Revision</div> </div> <div> Joinery Screen Wall Details AR 5 A </div>
---------------	------------------	---------------------------	---------------	--	--	---	---	--	--



PROPOSED EXTERNAL SLIDING DOOR

EXTERNAL 2 LEAF SLIDING DOOR
 FRAME: ALUMINIUM POWDERCOAT TO MATCH EXISTING
 LEAVES: ALUMINIUM FRAME WITH GLAZING
 GLAZING: LAMINATED LOW-E VIRIDIAN "COMFORT PLUS"
 NEUTRAL 82 6.38mm OR SIMILAR
 HARDWARE: D-PULL HANDLE TO MATCH EXISTING
 CONFIRM AS 1428.1 COMPLIANCE
 MORTICE LOCK LEVERSET

ONE WAY VISION WINDOW
 STICK. VISIBLE THROUGH FROM
 STAFF BACK OF HOUSE SIDE →



PROPOSED INTERNAL ENTRANCE DOOR

SINGLE HINGED GLAZED DOOR WITH SIDE WINDOW
 FRAME: ALUMINIUM POWDERCOAT TO MATCH EXISTING
 LEAVES: ALUMINIUM FRAME WITH GLAZING
 GLAZING: SINGLE GLAZED
 HARDWARE: LEVER HANDLE TO MATCH EXISTING
 CONFIRM AS 1428.1 COMPLIANCE
 MORTICE LOCK LEVERSET
 STAFF SWIPE ACCESS

Verify all dimensions on site before commencing the work shown on this drawing. Work to written dimensions only, do not scale from drawings. Check all dimensions for discrepancies and report any discrepancies for a decision before proceeding with work.

constructive
dialogue
architects

Suite 4
 462 Cleveland Street
 Surry Hills NSW 2010
 +612 9319 1709
 constructivedialogue.com.au
 Registered Architect - Nicholas Seemann (6731)
 ABN 35 105 167 066
 © constructive dialogue architects' studio pty ltd

Client
 **Health**
 Western NSW
 Local Health District
 Western NSW Local Health
 District
 65 Church Street, MUDGEES 2850

Project
 Grenfell MPS Upgrade

Project No.
 2111 - 05

Scale
 1 : 20
 Sheet Size
 A3

Drawn By
 VM / JH

Drawing Title
 Proposed Door Details

Drawing No.
 AR 6

Revision
 A

Revision	Date	Issue Notes	Checked
A	10-02-23	FOR TENDER	JH